

Tambora Glare

IMMERSIVE POWERFUL EFFECTS FOR YOUR CREATIVITY

- **Light Source:**

Blinder Engine: RGBA LEDs 10x50W
Strobe Engine: 2 (lines) x 125CW+125WW x1W LEDs for each line

- **Zoom Range:**

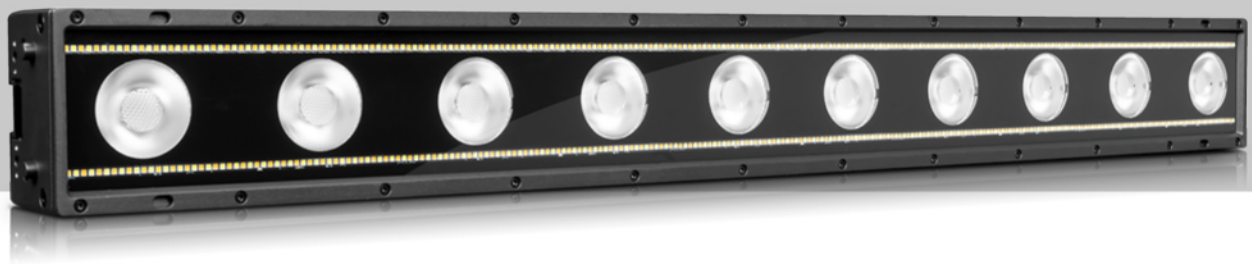
RGBA LEDs: 22° beam angle aperture
WW/CW LEDs: 120° beam angle aperture

- **Shield Family:**

Moving head fixture suitable for outdoors (IP66)

- **CloudIO Ready:**

Fully compatible with CloudIO



Lighting design is all about creating the right atmosphere. It's about evoking emotion, telling a story, and making every moment shine. Tambora Glare is here to take your lighting designs to the top—merging vintage aesthetics with cutting-edge technology. Whether you're designing for a dynamic EDM festival, a theatrical production, or a live TV broadcast, Tambora Glare delivers

unparalleled performance and visual impact. Let's dive into its standout features!

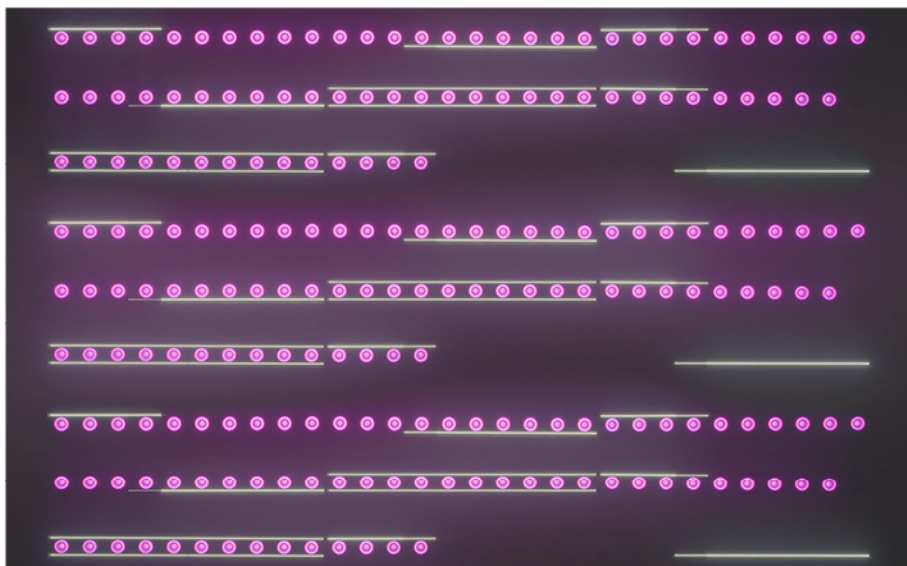
A MULTI-FUNCTIONAL POWERHOUSE

Tambora Glare is not just another light in the crowd. This hybrid bar boasts two lines of ultra-powerful strobe effects, each line equipped with 25 segments,

delivering an electrifying experience that's perfect for fast-paced shows like EDM concerts. The strobe lines provide an intense, rhythmic pulse that will elevate the energy of any event. But Tambora Glare is not just about strobing—thanks to its RGBA LED technology, it simulates the warm glow of tungsten lamps with stunning red-shift effects, offering a truly unique lighting experience. Its 10 x 50W RGBA LEDs give you rich, warm hues while maintaining exceptional color accuracy and blending. The red-shift effect allows for smooth dimming toward warm, ambient light, making it the perfect tool for TV studios where such effects can create a compelling atmosphere.

PRECISE CONTROL WITH EXCEPTIONAL VISIBILITY

The RGBA LEDs allow for excellent color mixing, ensuring that each pixel remains consistent and accurate throughout the performance. With an aperture of around 22° for the RGBA LEDs and 120° for the CW/WW LEDs, the light is evenly diffused, creating smooth, soft effects that blend seamlessly into any setup.



April 2025 - Subject to change without notification

Welcome to

Wonderlight



Tambora Glare



Tambora Stormy Linear

SEAMLESS INTEGRATION AND STUNNING VISUALS

Creating intricate, high-impact visuals has never been easier: Tambora Glare's Advanced Layer Management system allows for dynamic and engaging effects with six layers of control. You can choose background color, add built-in macro sequence, and integrate external video content—all while ensuring seamless transitions between layers, both for the RGB and for the strobes. Whether you're crafting intricate chase sequences or designing ambient light landscapes, Tambora Glare offers unmatched flexibility. With single-pixel mapping, each LED is individually addressable, offering precise control over every detail. Thanks to its modular design, you can easily configure Tambora Glare in

various setups, from horizontal arrays to vertical installations, with the help of mounting accessories and magnetic filters like frost and neutral density. The result? A versatile system that adapts to any venue, and any need.

IP66 PROTECTION FOR ANY ENVIRONMENT

Tambora Glare is a tough performer, built to withstand the challenges of any environment. With an IP66 protection rating, it is resistant to dust and water, making it the ideal choice for both indoor and outdoor events.

FLEXIBLE AND EASY TO USE

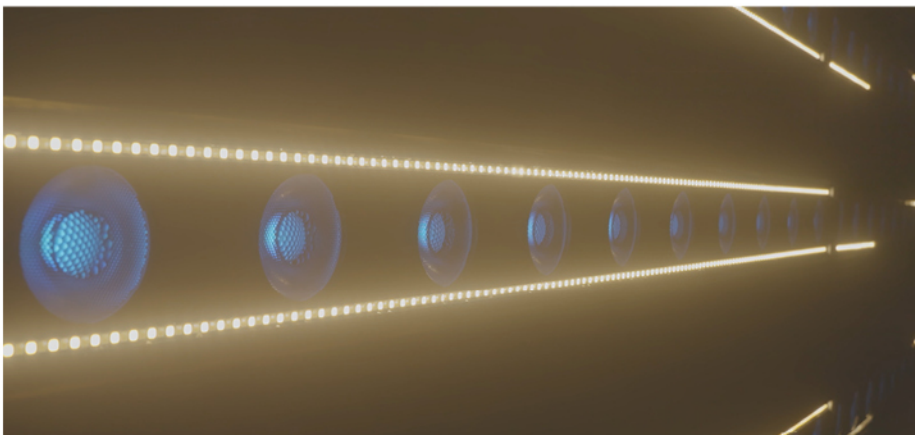
The built-in lock system allows for quick and secure horizontal setup, while the option to mount the fixture in vertical array configurations gives

you flexibility in your design. Whether you're adding it to a larger array or using it as a standalone fixture, Tambora Glare's modular design makes it easy to integrate into any system. Its modularity ensures seamless integration with Tambora Stormy Linear, as both fixtures share the same mounting accessories, dimensions, and signature design. With its lightweight design (around 14kg) and straightforward mounting options, Tambora Glare is also easy to transport and install. And with its magnetic filter system, swapping filters like frost or neutral density is fast and simple, giving you even more control over the look and feel of your lighting.

EXCEPTIONAL PERFORMANCE ACROSS ANY VENUE

Tambora Glare delivers exceptional performance in any setting. Whether used for TV production, touring setups, or EDM festivals, Tambora Glare delivers the kind of stunning, seamless lighting that professionals demand. The distance between pixels is consistent, ensuring smooth transitions and visual continuity across the fixture when used in arrays, delivering a seamless, impactful light show that enhances any event.

Ready to redefine your lighting game? Contact us to discover Tambora Glare's key features in person!



April 2025 - Subject to change without notification

Tambora Glare

MAIN FEATURES

- Blinder Engine: RGBA LEDs 10x50W
- Strobe Engine: 2 (lines) x 125CW+125WW x1W LEDs for each line
- RGBA LEDs beam angle: 22°
- WW/CW LEDs beam angle: 120°
- Advanced Layer Management System
- Single Pixel Mapping
- IP66 Rating (Shield Family)
- Frost filters and Neutral Density filter available as accessories
- Built-in lock system for horizontal setup
- Accessories to assemble the bars in vertical array configurations
- CloudIO Ready: fully compatible with CloudIO
- Weight: 14 kg (30.9 lbs)
- Dimensions without bracket (LxWxH): 1000 x 136 x 106 mm (39.4 x 5.3 x 4.2)